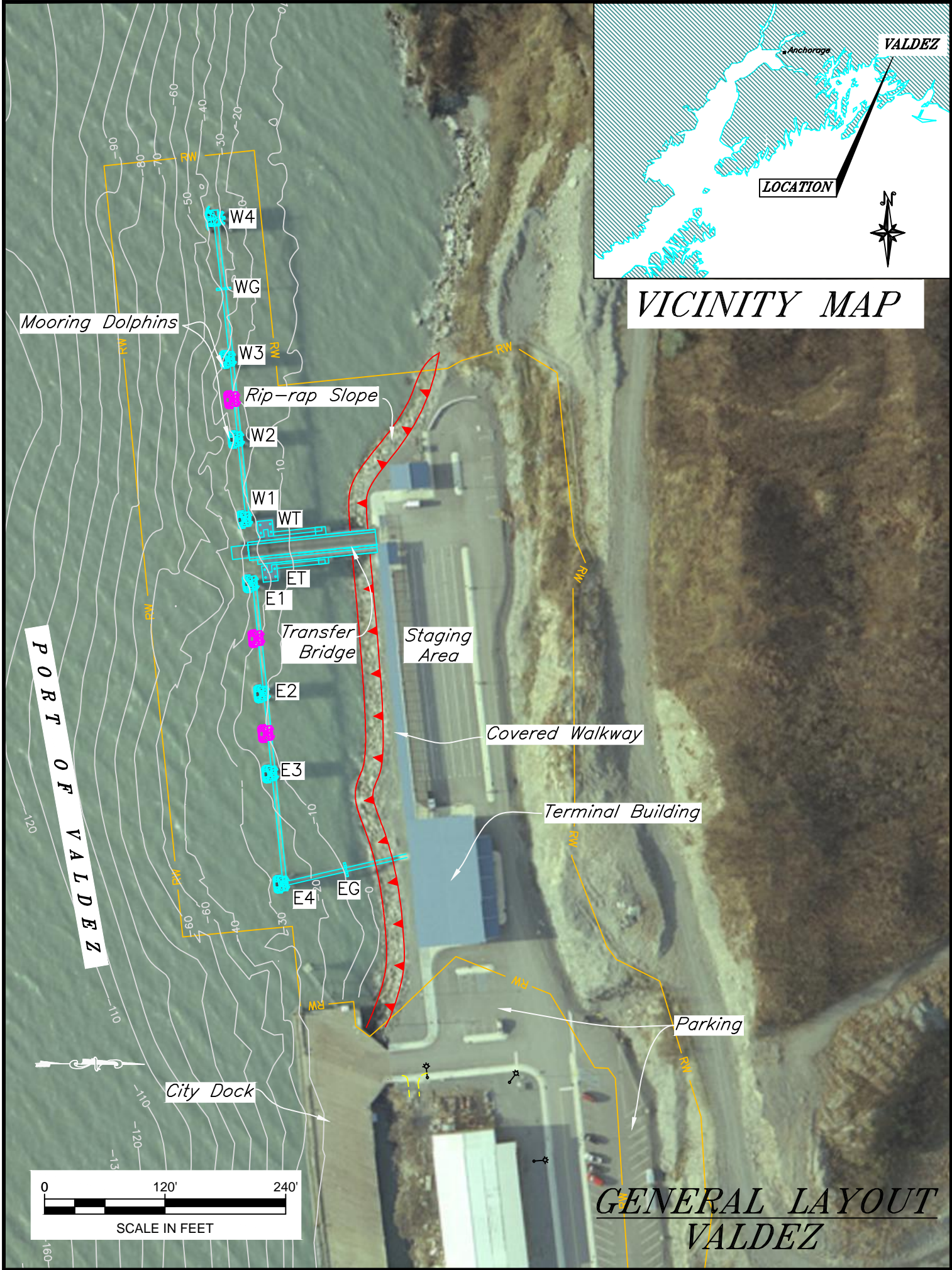


VICINITY MAP



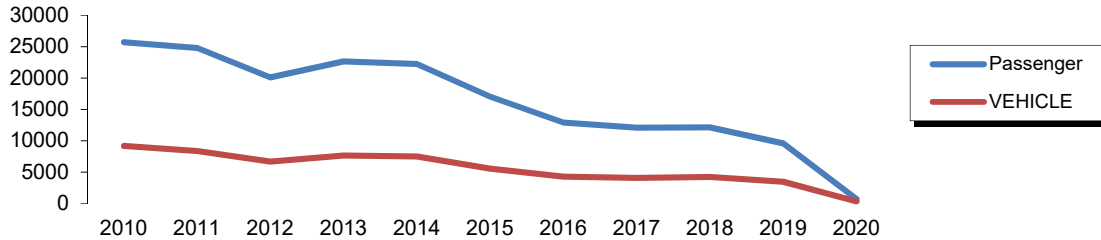
# Valdez Ferry Terminal

520 Ferry Way

**Owner:** State of Alaska

**Terminal Manager:** Todd Aldrich 907-835-4503

**Terminal Description:** Valdez is a side-loading facility consisting of a dedicated staging and parking areas, terminal building, covered pedestrian walkways, steel transfer bridge with a cable supported bridge lift (Syncrolift) system, eight steel pile dolphins and catwalks/gangways for line-handling access. The past 10 years of total passenger and vehicle traffic at Valdez is shown below.



The most recent above water survey & fracture critical inspection was completed on August 10, 2022. The underwater inspection occurred on August 22, 2021.

Vessels		Uplands	
Name	Berthing, Alignment	Short-Term Parking:	6 cars, 2 hcp
Aurora/Kennicott	Port/Starboard	Long-Term Parking:	38
ACF	Port/Starboard	Staging Area:	buses/trucks
		Paint Striping:	Yes
<b>Tidal Data</b> (MLLW 0.0 feet)		Driving Surface:	Asphalt
EHW	16.5		
MHHW	11.8	<b>Utilities</b>	
MHW	10.9	at Terminal at Ramp	
ELW	-6.0	Electrical:	Yes, city & backup power
		Water:	Yes Yes
<b>Terminal Building</b>		Sewer:	Yes (City) Yes
Year Built:	2006	Telephone:	Yes Yes
Square Footage:	4500 s.f.	Fuel:	Yes, UST No
Heating System:	Furnace	Wireless Bridge:	Yes -
Fuel Storage:	UST		
Fire Protection:	Alarm Pyrotronics	<b>Vehicle Transfer Bridge - #1429</b>	
Condition:	New	Type:	21' x 125' steel plate girder
		Year Built:	2004
<b>Generator &amp; Building</b>		Shoreward support:	Concrete abutment
Year Built:	2006	Seaward support:	Steel Lift Beam-Syncrolift
Square Footage:	300 s.f.	Coating:	Wasser Paint
Heating System:	Electric	Pedestrian Access:	Covered walkway, guardrail generation
Fuel Storage:	AST	Lighting:	Overhead fixtures
Fire Protection:	Halon	Condition:	New
Condition:	New	Load Posting Sign:	N/A
		Original Design Load:	HS 25

Dolphins								
Dolphin	Dolphin Piles	Fender Support	Fender Face	Anodes	Built	Cond.	Hawse Extensions	Notes
EG	1V	-	-	Yes	2004	Good	Yes	
E4	2B, 2V	Hanging	UHMW	Yes	2004	Good	Yes	Red navlight
E3	2B, 2V	Hanging	UHMW	Yes	2004	Good	Yes	
E2	2B, 2V	Hanging	UHMW	Yes	2004	Good	Yes	
E1	2B, 2V	Hanging	UHMW	Yes	2004	Good	Yes	
ET	4V	-	-	Yes	2004	Good	-	
WT	4V	-	-	Yes	2004	Good	-	
W1	2B, 2V	Hanging	UHMW	Yes	2004	Good	Yes	
W2	2B, 2V	Hanging	UHMW	Yes	2004	Good	Yes	
W3	2B, 2V	Hanging	UHMW	Yes	2004	Good	Yes	
WG	1V	-	-	Yes	2004	Good	-	
W4	3B, 3V	Hanging	UHMW	Yes	2004	Good	Yes	Red navlight

Catwalks / Gangways									
#	From Struct.	To Struct.	Length / Style / Main Members	Built	Safety Chains?	Cond.	Lighting	Notes	
C1	Shore	EG	50' / Catwalk / 10"x10" Tube Girders	2004	Yes	Good	Tubuloid		
C2	EG	E4	64' / Catwalk / 10"x10" Tube Girders	2004	Yes	Good	Tubuloid		
C3	E4	E3	99' / Catwalk / 10"x10" Tube Girders	2004	Yes	Good	Tubuloid		
C4	E3	E2	69' / Catwalk / 10"x10" Tube Girders	2004	Yes	Good	Tubuloid		
C5	E2	E1	99' / Catwalk / 10"x10" Tube Girders	2004	Yes	Good	Tubuloid		
C6	E1	ET	9' / Catwalk / 2.5"x2.5" Bottom Chord	2004	No	Good	None		
G1	ET	EBP	44' / Gangway / 2.5"x2.5" Bottom Chord	2004	No	Good	Tubuloid		
G2	WT	WBP	44' / Gangway / 2.5"x2.5" Bottom Chord	2004	No	Good	Tubuloid		
C7	WT	W1	9' / Catwalk / 2.5"x2.5" Bottom Chord	2004	No	Good	None		
C8	W1	W2	69' / Catwalk / 10"x10" Tube Girders	2004	Yes	Good	Tubuloid		
C9	W2	W3	69' / Catwalk / 10"x10" Tube Girders	2004	Yes	Good	Tubuloid		
C10	W3	WG	64' / Catwalk / 10"x10" Tube Girders	2004	Yes	Good	Tubuloid		
C11	WG	W4	64' / Catwalk / 10"x10" Tube Girders	2004	Yes	Good	Tubuloid		

**LEGEND**

ET = East Lift Tower  
G1 = Gangway

V = Vertical Steel Pipe Piling  
EG = East Gangway Dolphin

B = Battered Steel Pipe Piling  
WBP = West Bridge Platform

Terminal Projects			
Year	Project #	Project Name	Description
1963	WM 63419	Valdez Ferry Terminal Facilities	Original stern-loading terminal construction consisted of uplands fill, three timber tidal ramps, and seven timber Duncan dolphins. Built next to the Valdez Boat Harbor pre-Good Friday Earthquake.
1968	3-68419	Valdez Ferry Terminal	New terminal construction, adjacent to the City Dock, consisting of new terminal building, two timber tidal ramps, four steel pipe pile and concrete capped breasting dolphins and two steel pipe pile and concrete capped mooring dolphins, with four timber access catwalks.
1987	RS-0400(2)	Valdez FT Rehabilitation	Replace timber tidal ramps and timber support piles with steel tidal ramps and steel support piles. Installed water, shorepower and illumination upgrades.
2004	75098 & 73652	Valdez FT Replacement	Demolished the existing stern-berth. Constructed new side-loading terminal facility consisting of terminal building, new uplands parking and staging areas, steel transfer bridge with Syncrolift system, and 8 breasting dolphins with catwalk access.
2009	69050 / SHAK-0005(575)	Valdez - Ferry Dock Hoist Upgrade	Replaced the existing relay-based control panel for the transfer bridge lift system with a PLC-based control panel.
2009	73076	Valdez FT Security Upgrades	Installed security cameras on exterior of terminal building, in the staging area and at dolphins on either side of the transfer bridge. Cameras are tied in to the AMHS security network.
2020	SAMHS00088	Valdez Fuel Storage Tank	Removed underground tank and installed new 1,000 gal above ground tank

## GENERAL FACILITY EVALUATION

Item		Rating
Marine	Mooring Structures	6
	Uplands Staging area	7
	Uplands Waiting Building	7
	Utilities	7

9	EXCELLENT CONDITION
8	VERY GOOD CONDITION - no problems noted
7	GOOD CONDITION - some minor problems.
6	SATISFACTORY CONDITION - structural elements show minor deterioration
5	FAIR CONDITION - all primary structural elements are sound but may have minor corrosion, cracking or chipping. May include minor erosion on bridge piers.
4	POOR CONDITION - advanced corrosion, deterioration, cracking or chipping. Also significant erosion of concrete bridge piers.
3	SERIOUS CONDITION - corrosion, deterioration, cracking and chipping, or erosion of concrete bridge piers have seriously affected deck, superstructure, or substructure. Local failures are possible.
2	CRITICAL CONDITION - advanced deterioration of deck, superstructure, or substructure. May have cracks in steel or concrete, or erosion may have removed substructure support. It may be necessary to close the bridge until corrective action is taken.
1	"IMMINENT" FAILURE CONDITION - major deterioration or corrosion in deck, superstructure, or substructure, or obvious vertical or horizontal movement affecting structure stability. Bridge is closed to traffic but corrective action may put back in light service.
0	FAILED CONDITION - out of service - beyond corrective action
N	Not applicable

For a copy of the latest facility inspection reports contact the AKDOT&PF Marine Design Department.