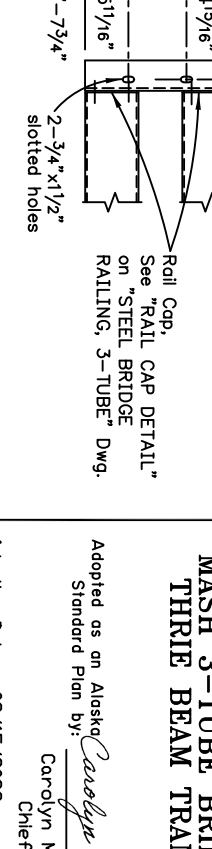
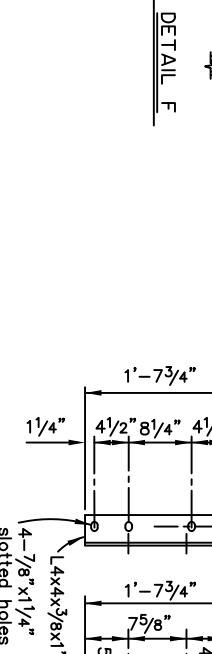
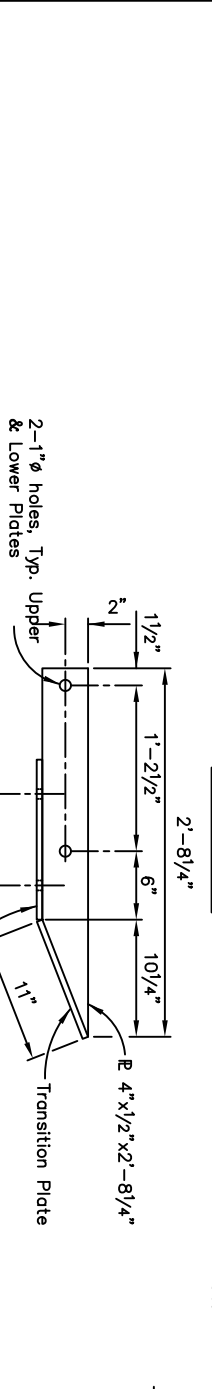
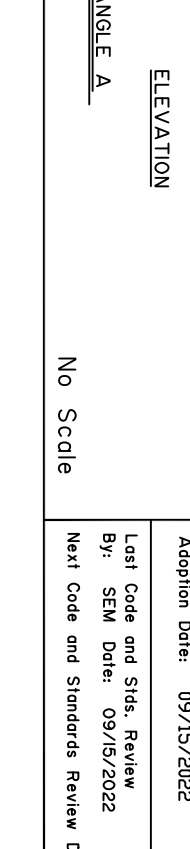
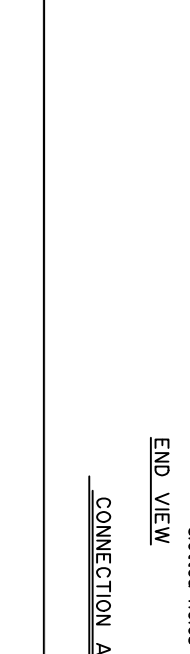
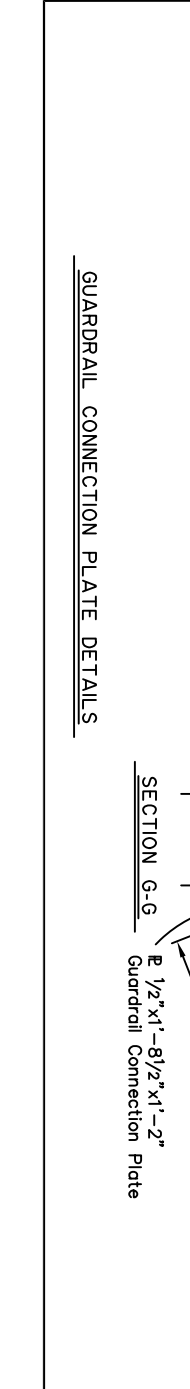


**NOTES:**  
 1. Conform to G-00, G-05 and G-10 of the Standard Plans for all Three Beam Transition details not shown.  
 2. Three Beam Transition part numbers are listed in parentheses ( ) and referenced in the "Task Force 13 Guide to Standardize Roadside Hardware."



**NOTES:**  
 1. Drill and Tap 5 holes for 7/8" diameter H.S. Bolts. See "DETAIL F".  
 2. 2" Chamfer, Typ.



**NOTES:**  
 1. Conform to G-00, G-05 and G-10 of the Standard Plans for all Three Beam Transition details not shown.  
 2. Three Beam Transition part numbers are listed in parentheses ( ) and referenced in the "Task Force 13 Guide to Standardize Roadside Hardware."

Adopted as an Alaska Standard Plan by:  
 Carolyn Morehouse, P.E.  
 Chief Engineer  
 Adoption Date: 09/15/2022  
 Last Code and Stds. Review  
 By: SEM Date: 09/15/2022  
 Next Code and Standards Review Date: 09/15/2032