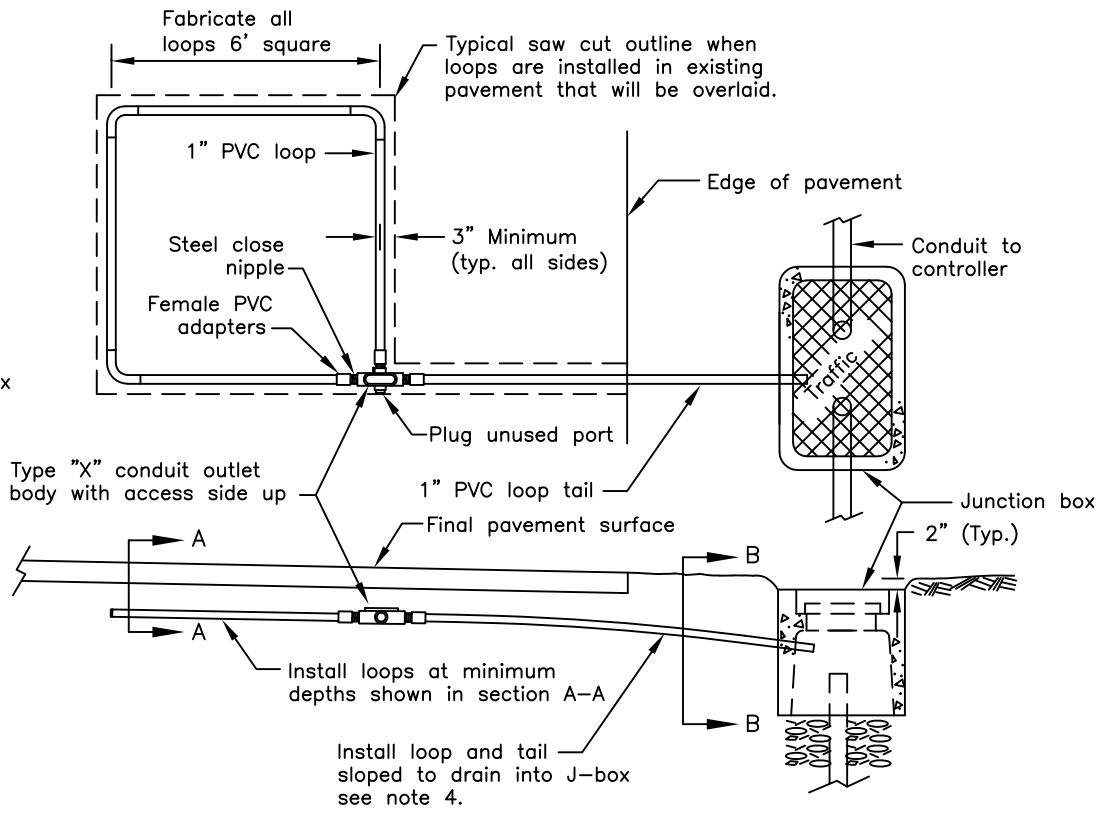
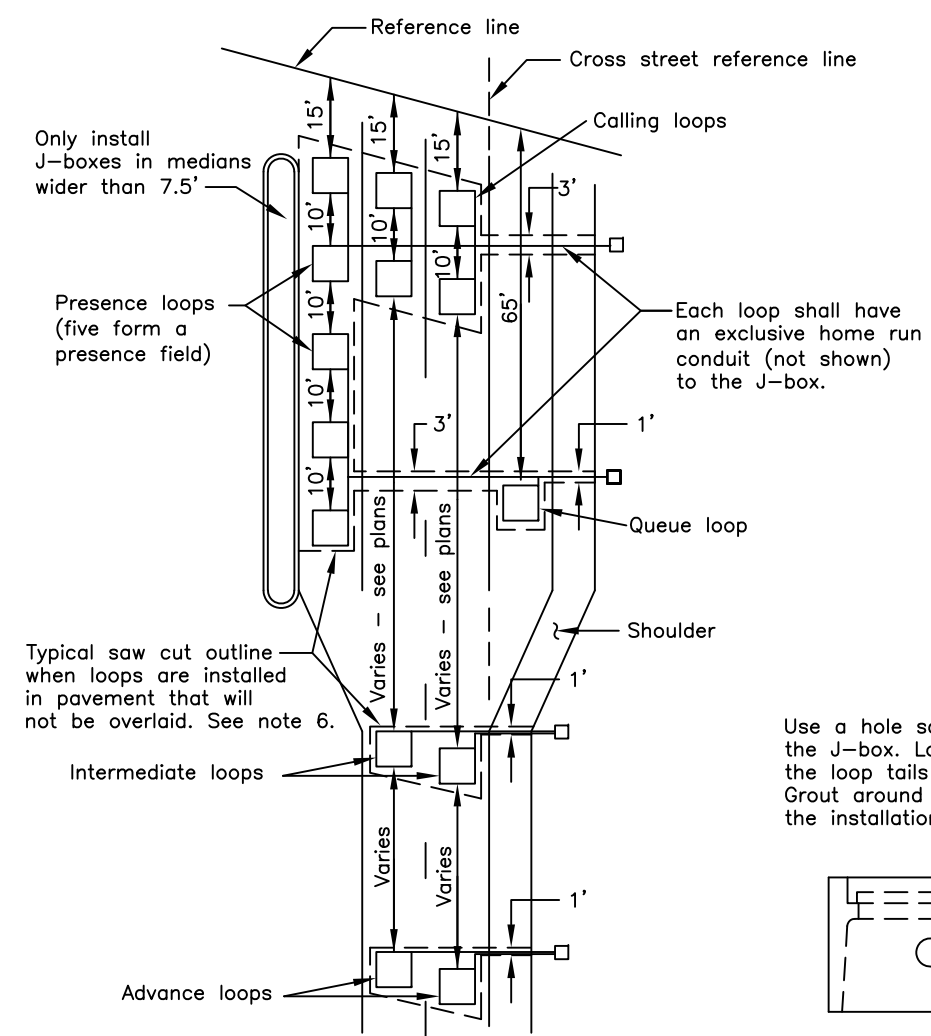


CURB SECTION



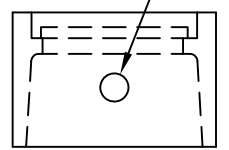
SHOULDER SECTION



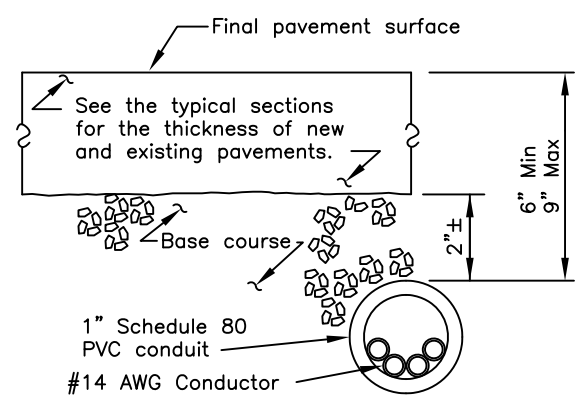
TYPICAL LOOP SETBACKS

Measure the setbacks from the reference line along the center of each lane.

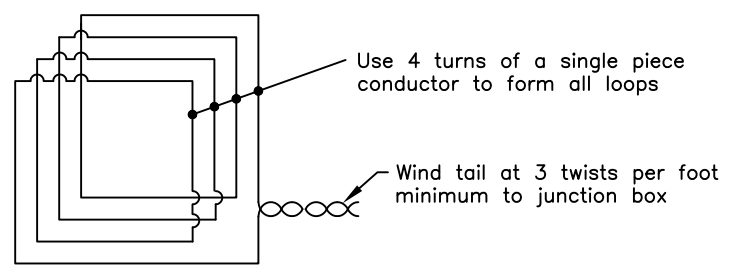
Use a hole saw to cut loop tail entry into the J-box. Locate the hole to ensure the loop tails drain into the J-box. Grout around the loop tails to complete the installation.



VIEW B-B



SECTION A-A



LOOP WIRING DETAIL

TYPICAL PVC CONDUIT ENCASED LOOP DETECTOR INSTALLATION

GENERAL NOTES

- Solvent weld all PVC to PVC joints. Use hot dip galvanized steel type X outlet bodies to join the loops and tails.
- Use tube loop wire per IMSA specification 51-5 with the optional polyethylene tubing.
- Install and test all loop detectors before overlaying the existing pavement or paving the new roadway.
- Drill five 1/4" weep holes on 12" centers in the underside of the conduit at the low spot when the loop and tail cannot be installed to drain into the J-box. If the Engineer allows 90 degree elbows to be used, drill a 1/4" hole in the low point.
- When installing loop detectors in existing pavement, cut the asphalt with a saw and remove all asphalt within the saw cut.
- Where existing pavement will not be overlaid, cut the pavement with a saw as follows:
 - Remove all pavement from the length of the five loop presence fields.
 - Enclose all loops that enter a common junction box within one saw cut area.
 - Cut to within 12" of lane and edge lines to preserve them.
 - Remove asphalt to gutter where there are no edge lines.
 - Cut across lane lines when loops are side by side.
 - Cut trenches crossing a lane a minimum of 3' wide.
 - Cut trenches crossing a shoulder a minimum 12" wide.
- Heat and tack coat the edges of existing pavement before paving cutouts. Compact the asphalt mixture with a self-propelled steel wheeled roller. Furnish asphalt mix that conforms to section 401 of the Specifications, and is approved by the Engineer. Maintain the replacement asphalt temperature at the mixing temperature specified in the approved mix design until compaction has begun.
- To establish the reference lines, extend the right edges of the outermost through lanes across the intersection.

State of Alaska DOT&PF
ALASKA STANDARD PLAN
LOOP DETECTOR
INSTALLATION

Adopted as an Alaska Standard Plan by: *Kenneth J. Fisher*
Kenneth J. Fisher, P.E.
Chief Engineer

Adoption Date: 02/08/2019

Last Code and Stds. Review By: Date:

Next Code and Standards Review date: 02/08/2029